



**WORLD'S BEST  
ALLOY BULLBARS**

**East Coast Bullbars (ECB Pty Ltd)**

Tel: 07 3897 5700

Fax: 07 3283 1168

ecb@ecb.com.au www.ecb.com.au

29 Snook St  
Clontarf QLD 4019  
Australia

Po Box 122  
Margate QLD 4019  
Australia

**BF84SY**

REPLACES: 11.02.10  
REVISED: 28.06.10

## **FITTING INSTRUCTIONS**

### **FORD TRANSIT 9/06- BIG TUBE™ BAR VEHICLE FRONTAL PROTECTION SYSTEM (VFPS) FOR AIR BAG & ADR COMPLIANT VEHICLES**

Check installation hardware before commencing.

1. Remove bumper cover; lift bonnet, remove number plate, remove four 10mm head bolts (two each side) from rear of bumper sides, these can be accessed from under guard in front of wheel, remove four T40 star head bolts from front face of bumper (two beside number plates and two in front steps), remove two plastic clips from around bonnet latch (push in centres in and remove) and remove two T30 star head bolts from front face of bumper under bonnet next to headlamps.
2. Separate bumper cover; working on van face with bumper on soft material remove three T20 star head screws per side and with screwdriver remove three spring clips per side. Remove bumper ends carefully to avoid damage to centre.
3. Trim bumper centre, using a sharp knife or similar as per **figure 1**.
4. Remove passenger side tow hook by unbolting two 13mm head bolts from underside of bumper support, two 13mm head bolts from inside of chassis rail and two 13mm head bolts from outside of chassis rail. Discard tow hook.
5. Taking care not to damage clips, unfix plastic air dam from top of bumper support.
6. Unbolt and remove bumper support, eight 13mm head bolts (four per side).
7. Bumper Cover Support: On both drivers and passenger side, the flange is to be folded 90° using a hammer, top and bottom to allow fitment of steel mounting brackets. **See figure 2. Treat folded area with a rust inhibitor or similar.**
8. Slide the driver's side steel mounting bracket (supplied) over bumper support with bolt hole section to inside. Use M10 x 40 bolt, spring and flat washer (supplied) with the 10mm steel spacer plate with one hole (supplied) between the steel mounting and bumper support. Use M10 bolt, flat and spring washer (supplied) through hole into captive nut in bumper support. **See figure 3. FINGER TIGHTEN ONLY.**
9. Slide the passenger side steel mounting bracket (supplied) over bumper support with bolt hole section to inside. Use two M10 x 40 bolts, flat and spring washer (supplied) with the 10mm steel spacer plate with two holes (supplied) between the steel mounting bracket and bumper support. Attach to where original tow hook holes are in bumper support. **See figure 4. FINGER TIGHTEN ONLY.**
10. Use a die grinder to open out large front hole on underside of chassis (each side), **see figure 5** to allow fitment of 3/8 x 1 1/2 bolts on wire. **Blow all fillings clear and treat all exposed metal with a rust inhibitor.**
11. Lift bumper support and steel mounting brackets onto vehicle. Align with original holes and reattach using eight M10 x 40 x 1.25 bolts, flat and spring washers (supplied). Use two 3/8 x 1 1/2 bolts on wire, flat and spring washers and nuts (two per side) (supplied) fit to underside front of chassis rail. **FINGER TIGHTEN ONLY. NOTE: Crimp wire tight and trim off excess to avoid rattling.**



East Coast Bullbars (ECB Pty Ltd)

Tel: 07 3897 5700

Fax: 07 3283 1168

ecb@ecb.com.au www.ecb.com.au

29 Snook St  
Clontarf QLD 4019  
Australia

Po Box 122  
Margate QLD 4019  
Australia

12. Measure distance between outside of steel mounting brackets. Align as per the inside measurements of alloy mount on protection bar. Centre steel mounting brackets to vehicle.
13. **TIGHTEN ALL BOLTS** in the following order. Bolts to underside of bumper support ensuring steel mounting brackets stay parallel, eight M10 bolts to front of chassis rails and then the two 3/8 nuts, flat and spring washers on the underside of the passenger chassis rail. **Ensure all bolts are tightened and none are missed.**
14. Refit bumper cover in the reverse order to step 1.
15. Fit ECB LED indicator / park lights (supplied) into protection bar as per instructions supplied with the LED indicator kit. **NOTE: Ensure park light is to outside. See figure 6.**
16. Attach 6mm clip lock trim (supplied) to centre of protection bar. **See figure 7.**
17. Attach infill trim (supplied) to each side of the protection bar. **NOTE: Trim 30mm off lower edge so trim will sit over end of protection bar. See figures 8. Trim excess off end to follow protection bar. See figure 10. NOTE: Seal any exposed edges of trim with silicone or similar to avoid corrosion of inner steel.**
18. Wiring of indicator / park lights; from the underside of vehicle find standard vehicle wiring, push wiring under headlamp into engine compartment alongside vehicle wiring harness. Attach to harness using zip tie (supplied). As indicator / park lights are part of the headlamp, on lower rear of headlamp, access headlamp wiring harness. Use cable locks (supplied) to splice ECB indicator / park light wiring into vehicle wiring.
19. Attach ECB protection bar to steel mounting brackets using 1/2 x 1 1/2 bolts, flat and spring washers and nuts (supplied). **FINGER TIGHTEN ONLY.**
20. Align protection bar with vehicle leaving a sufficient gap between bar and vehicle to allow for vehicle body movement. **See figure 9** for front view and **figure 10** for side view.
21. Connect ECB indicator / park light and **CHECK FOR CORRECT OPERATION.**

#### **ENSURE THESE INSTRUCTIONS ARE LEFT WITH VEHICLE OWNER AND/OR OPERATOR**

**Note:** When fitting/refitting the licence plate to the vehicle, ensure there is no obstruction to licence plate vision in accordance with local authorities. If required relocate licence plate to an alternate location.

#### **Further VFPS Notes:**

- a) Do not attach VFPS to the vehicle using anchorages not intended for this purpose (e.g. engine mounting bolts).
- b) Do not use this product for any vehicle make or model, other than those specified by the VFPS manufacturer.
- c) Do not remove the plaque or label from the VFPS.
- d) Do not modify the structure of the VFPS in any way.
- e) No accessory or fitment should project forward of the VFPS forward profile.
- f) **ENSURE THESE INSTRUCTIONS ARE LEFT WITH VEHICLE OWNER AND/OR OPERATOR.**

#### **IMPORTANT INFORMATION**

Periodically check bolts and nuts for correct tightness, especially if travelling on rough roads.



East Coast Bullbars (ECB Pty Ltd)

Tel: 07 3897 5700

Fax: 07 3283 1168

ecb@ecb.com.au www.ecb.com.au

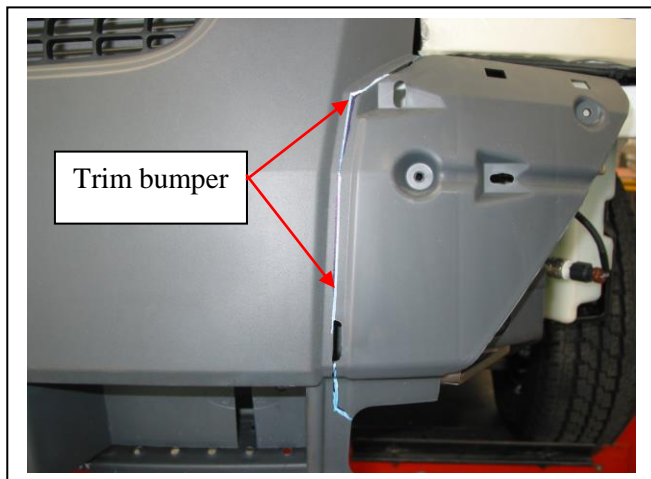
29 Snook St  
Clontarf QLD 4019  
Australia

Po Box 122  
Margate QLD 4019  
Australia

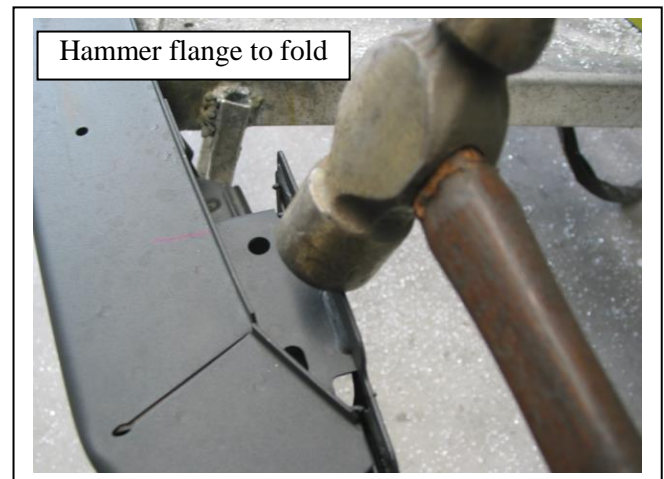
**WORLD'S BEST  
ALLOY BULLBARS**

**FITTING KIT**

1 – Pair steel mounting brackets.	12 – ½ flat washers.
1 – 10mm steel washer plate with one hole.	6 – ½ spring washers.
1 – 10mm steel washer plate with two holes.	6 – ½ nuts.
11 – M10 x 40 x 1.5 bolts.	1 – ECB LED Indicator / Park light kit.
4 – 3/8 x 1 ½ bolts and washers on 200mm wire.	6 – Cable locks.
4 – 3/8 nuts.	1 – 1260mm length 6mm clip lock trim.
15 – 3/8 flat washers.	2 – 800mm lengths 6mm infill trim
15 – 3/8 spring washers.	2 – 150mm zip ties.
6 – ½ x 1 ½ bolts.	2 – Fog light surrounds



**Figure 1 – Passenger side shown**



**Figure 2 – Passenger side shown**



**Figure 3**



**Figure 4**



East Coast Bullbars (ECB Pty Ltd)

Tel: 07 3897 5700

Fax: 07 3283 1168

ecb@ecb.com.au www.ecb.com.au

29 Snook St  
Clontarf QLD 4019  
Australia

Po Box 122  
Margate QLD 4019  
Australia

WORLD'S BEST  
ALLOY BULLBARS

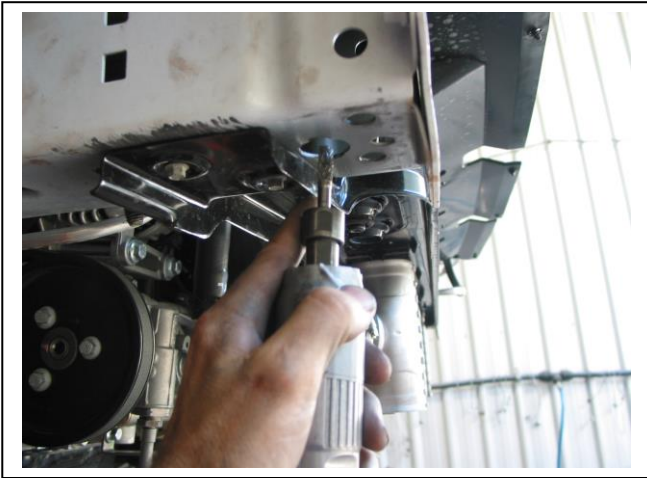


Figure 5

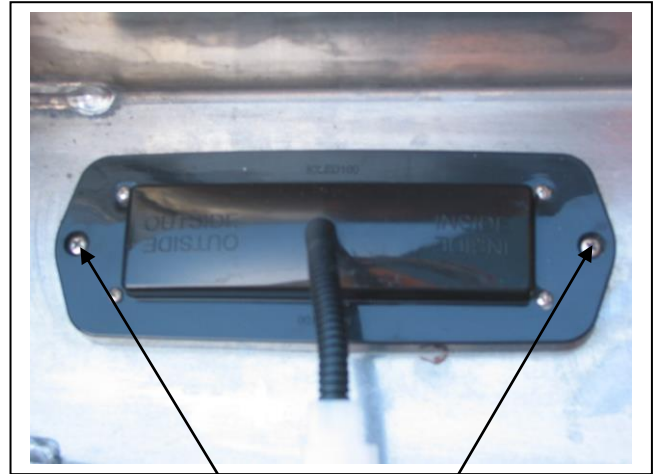
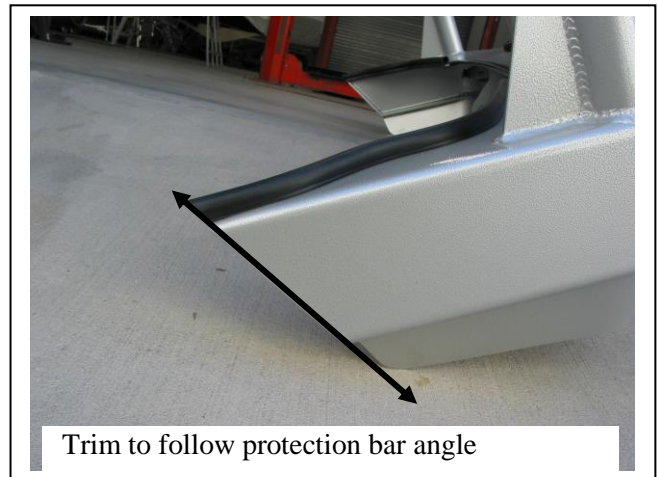


Figure 6  
Stainless steel self-tappers



Attach 6mm clip  
lock trim

Figure 7



Trim to follow protection bar angle

Figure 8

Note: Example only angle on bar maybe different to the above



Figure 9 – Front view shown



Infill trim

Figure 10 – Side view shown



**WORLD'S BEST  
ALLOY BULLBARS**

**East Coast Bullbars (ECB Pty Ltd)**

Tel: 07 3897 5700

Fax: 07 3283 1168

ecb@ecb.com.au www.ecb.com.au

29 Snook St  
Clontarf QLD 4019  
Australia

Po Box 122  
Margate QLD 4019  
Australia

**We value your comments**

Dear Fitter,

ECB would like to know how you went with the installation of this product. We value your comment and may need to contact you to clarify some details so please complete your contact details clearly.

We would appreciate if you could complete as many of the following details as possible.

<b>Your Name:</b>	<b>Your contact No.</b>
<b>Product Part No.</b>	<b>Product Invoice No.</b>
<b>Product Description:</b>	<b>Make, model, and year of vehicle:</b>
<b>Product Work Order No.</b>	<b>Company your from/Company product purchased from:</b>

**Date of Fitment:** \_\_\_\_/\_\_\_\_/\_\_\_\_

Was the fitting hardware supplied complete?

Yes

No

If no what was not supplied

---

---

Did the installation go well?

Yes

No

Please provide comments

---

---

---

Please draw diagrams if you need to.

**Post to**  
Reply Paid 122  
PO Box 122  
Margate QLD 4019

**Fax to**  
(07) 3283 1168



**WORLD'S BEST  
ALLOY BULLBARS**

**East Coast Bullbars (ECB Pty Ltd)**

Tel: 07 3897 5700

Fax: 07 3283 1168

[ecb@ecb.com.au](mailto:ecb@ecb.com.au) [www.ecb.com.au](http://www.ecb.com.au)

29 Snook St  
Clontarf QLD 4019  
Australia

Po Box 122  
Margate QLD 4019  
Australia



WORLD'S BEST  
ALLOY BULLBARS

East Coast Bullbars (ECB Pty Ltd)

Tel: 07 3897 5700

Fax: 07 3283 1168

ecb@ecb.com.au www.ecb.com.au

29 Snook St  
Clontarf QLD 4019  
Australia

Po Box 122  
Margate QLD 4019  
Australia

# DESPATCH CHECKLIST BF84SY

ICZBKCF84



Work Order #	
Finish:	
Transport:	
Due Date:	

OC.....2 – Steel mounting brackets (1 Pair).

BK.....1 – Bolt kit.

BK.....1 – ECB LED Indicator / Park light kit.

BK.....1 – 1260mm length 6mm clip lock.

BK.....2 – 800mm lengths 6mm infill trim.

OC.....2 – ECB Overriders – **Fitted to bar.**

OC.....2 – Fog light surrounds – **Fitted in bar.**

OC.....3 – 6mm air scoops – **Fitted in bar.**

OC.....6 – 3mm air scoops – **Fitted in bar.**

**OC..... Agi-pipe must be put on the end of the bar – see photo for placement**

**See other side of  
this page for  
photos of all  
mounts**



Is this product “the best it can be” Yes \_\_\_\_\_ / \_\_\_\_\_  
Wrapper’s initials / Checker initials

If **NO** fix before continuing

All parts checked and completed by:

Nut and bolts: \_\_\_\_\_ Date \_\_\_/\_\_\_/\_\_\_

Order control: \_\_\_\_\_ Date \_\_\_/\_\_\_/\_\_\_

Final wrap check: \_\_\_\_\_ Date \_\_\_/\_\_\_/\_\_\_



**WORLD'S BEST  
ALLOY BULLBARS**

**East Coast Bullbars (ECB Pty Ltd)**

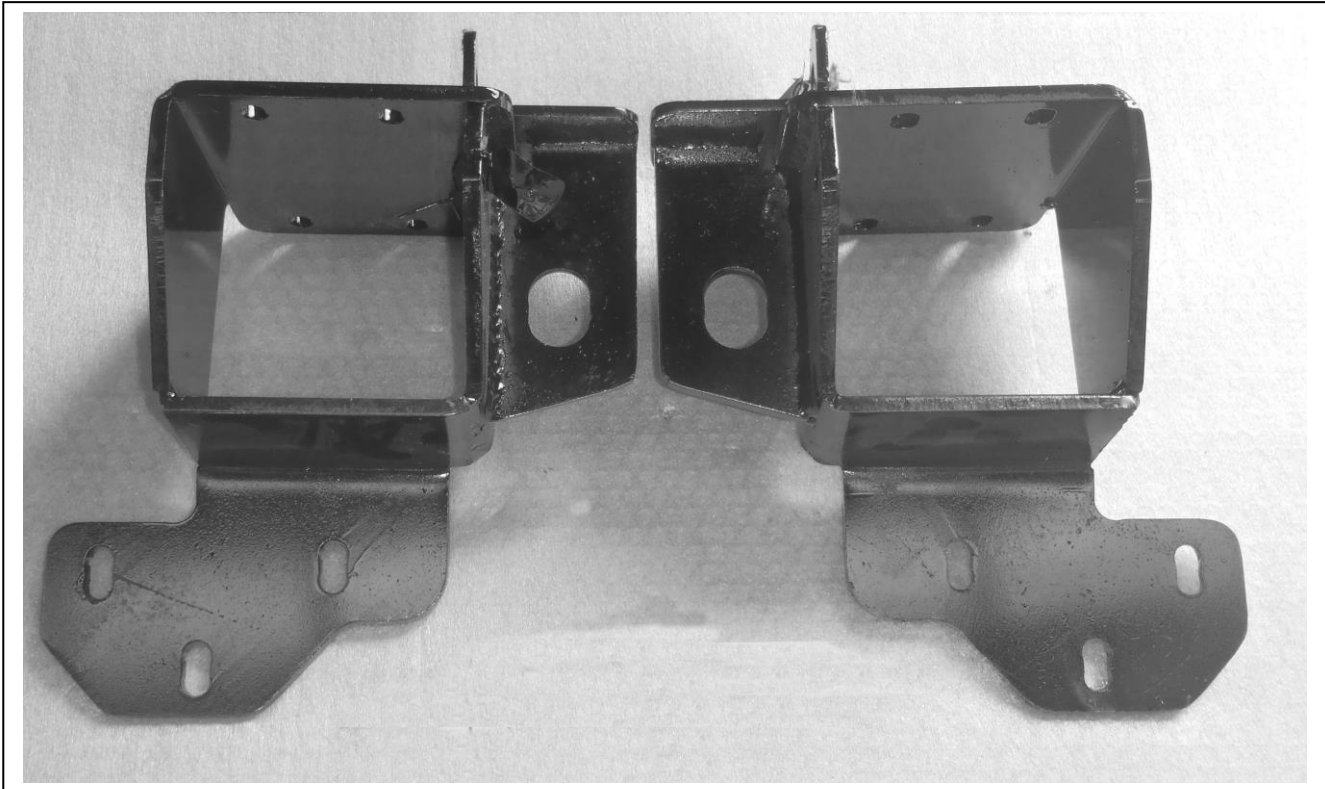
Tel: 07 3897 5700

Fax: 07 3283 1168

ecb@ecb.com.au www.ecb.com.au

29 Snook St  
Clontarf QLD 4019  
Australia

Po Box 122  
Margate QLD 4019  
Australia



**Ensure wing is wrapped with Agi-pipe**